

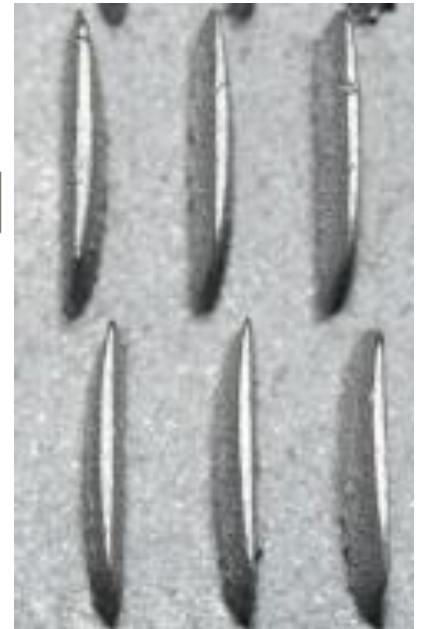


THERMAL PROCESS DEVELOPMENT

Cast Heat Exchangers

The Kablitz gilled heat exchanger for gaseous mediums is a multi-purpose design made of high-quality cast iron. The tested and proven design, layout and arrangement of the gilled heating surface guarantee high heat transfer with maximum heating surface concentration of up to $68 \text{ m}^2/\text{m}^3$. The high heating surface area per volume not only gives high efficiency in heat transfer, but also uses a minimal amount of space. Thanks to the self-supporting structure, a wide variety of arrangements is possible. The gilled plates are standardized into a modular system which makes the Kablitz design more economical. Along with grate bars, the gilled heat exchanger plates are cast in the Kablitz foundry allowing for the highest quality control. The Kablitz gilled heat exchangers have a long life, low maintenance and good corrosion resistance due to Kablitz's ability to control the casting. Depending on

the heat exchange mediums, sootblowing and water washing rakes can be added to help clean the plates.



APPLICATIONS

- Refineries
- Gas Fired Boilers
- Drying and Hot Air Plants
- Thermal and Catalytic Post-Combustion Plants
- Air Preheating
- DeNOx Plants
- Casting Smelting Plants
- Power Plants
- Heat Recovery



Contact Us

If you need design support, engineering or equipment for any kind of reciprocating grate or thermal fluid heater please call us or send an email. Let us know how we can support your plant.

770.203.2772 | sales@thermalpd.com
5665 Atlanta Hwy. | Suite102B-225 | Alpharetta, GA 30004